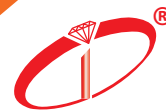


HAMMERS & MALLETS



ikohe

for more tools see our section
NEW ADDITIONS - pg # XXX



PICARD 1. Picard Silversmith Hammers

• Superior forged steel heads for high performance and durability, all fitted with hickory handles. Specifically designed for all types of planishing, forming, raising and embossing. Widely used by jewelers and metalsmiths. Made in Germany to DIN standards.

- A: 95mm
- B: 24mm
- C: 21mm Head Wt. 200g



Planishing Hammer, 1 flat face, 1 bowed, fine polished

38-1011 16501.200

- A: 105mm
- B: 28mm
- C: 28mm Head Wt. 375g



Planishing Hammer, 2 flat faces, fine polished

38-1012 16601.375

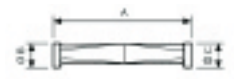
- A: 130mm
- B: 21mm
- C: 22mm Head Wt. 200g



Planishing Hammer, 2 flat faces, fine polished

38-1013 16701.200

- A: 140mm
- B: 24mm
- C: 24mm Head Wt. 300g



Planishing Hammer with 1 flat face, 1 round flat face

38-1014 16801.300

- A: 95mm
- B: 24mm
- C: 24mm Head Wt. 250g



Shrinking Hammer, 2 flat faces, fine polished

38-1015 16901.250

- A: 95mm
- B: 24mm
- C: 24mm Head Wt. 250g



Polishing Hammer, both sides bowed, fine polished

38-1016 17001.250

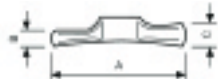
- A: 130mm
- B: 25mm
- C: 27mm Head Wt. 170g



Planishing Hammer, round flat two faces, fine polished

38-1017 18601.170

- A: 120mm
- B: 18X35mm
- C: 22X35mm Head Wt. 375g



Chasing Hammer, 2 differently bowed faces

38-1018 18701.375

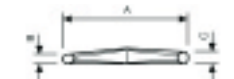
- A: 115mm
- B: 27mm
- C: 27X7mm Head Wt. 375g



Combina?on Hammer, fine polished

38-1019 18401.375

- A: 115mm
- B: 31X10mm
- C: 30X12mm Head Wt. 250g



Grooving Hammer, different faces, fine polished

38-1020 17501.250

- A: 125mm
- B: 20X18mm
- C: 24X22mm Head Wt. 250g



Chasing Hammer different faces, 2 bowed faces, fine polished

38-1021 17301.250

- A: 110mm
- B: 27X7mm
- C: 27X6mm Head Wt. 250g



Grooving Hammer, different faces, fine polished

38-1022 17591.250

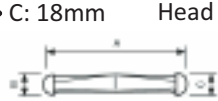
- A: 140mm
- B: 24mm Head Wt. 200g



Bordering Hammer straight pattern, dull-polished

38-1023 17701.200

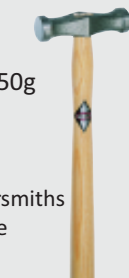
- A: 120mm
- B: 16mm
- C: 18mm Head Wt. 175g



Embossing Hammer, 2 high-bowed faces, fine polished

38-1024 17401.175

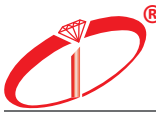
- A: 100mm
- B: 25mm
- C: 25mm Head Wt. 250g



Stretching Hammer for silversmiths with 1 flat face, 1 bowed face

38-1025 17101.250

- **Shrinking Hammer:** Also known as dishing hammer. It is used to force metal into a surface that is curved.
- **Planishing Hammer:** Changes the metal surface through hardening. Faces of the hammer must be fine finished or it will leave----
- **Polishing Hammer:** A well balanced hammer with bowed and mirror finished faces. This feature is advantageous to goldsmith.
- **Embossing Hammer:** With repeated hammer the metal is progressively moved from the back to form dimensional shapes.
- **Chasing Hammer:** Used to create a seamless form through compression with contrac?on without thinning the metal.-----
- **Grooving Hammer:** Usually has both ends that taper to a vee. Be?er known as a forging hammer. When hammering it forces-----
- **Bordering Hammer:** Frequently used for working in confined areas, these hammers have narrow horizontal faces.



2. Peddinghaus Silversmith Hammers

• Made in Germany. Premium quality German made hammers. Drop forged steel hardened and ground with fine finished faces. All mounted with ash handles shaped for a comfortable grip. Select from a complete range for: Embossing, Planishing, Raising, Grooving and Forming, Rivetting and Tinsmithing.

- A: 135mm
- B: 23mm
- C: 24mm Head Wt. 300g



Shrinking Hammer, 1 flat face, 1 bowed, fine polished

38-1041 #50.02



- A: 134mm
- B: 23mm
- C: 22mm Head Wt. 300g



Shrinking Hammer, 1 flat face, 1 bowed, fine polished

38-1042 #49.02



- A: 120mm
- B: 30mm
- C: 30mm Head Wt. 500g



Stretching Hammer, 2 faces, 1 flat -face, 1 light bowed, fine polish

38-1043 #60.02



- A: 80mm
- B: 24mm
- C: 24mm Head Wt. 170g

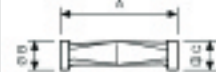


Planishing Hammer for silversmiths with 1 flat face, 1 bowed face

38-1044 #402.02



- A: 95mm
- B: 23mm
- C: 23mm Head Wt. 200g

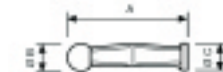


Shrinking Hammer, 2 flat faces, fine polished

38-1045 #47.02



- A: 104mm
- B: 24mm
- C: 24mm Head Wt. 250g



Polishing Hammer, 1 face light bowed, 1 medium bowed, fine polished

38-1046 #62.02



- A: 105mm
- B: 14mm
- C: 11mm Head Wt. 100g



Embossing Hammer, 2 differently bowed faces, fine polished

38-1047 #401.02



- A: 135mm
- B: 18mm
- C: 21mm Head Wt. 200g



Embossing Hammer, 2 high-bowed faces, fine polished

38-1048 #51.02



- A: 120mm
- B: 10mm
- C: 30mm Head Wt. 300g



Grooving Hammer, different faces, fine polished

38-1049 #54.02



- A: 105mm
- B: 27mm
- C: 25mm Head Wt. 300g



Planishing and grooving Hammer, round face, light bowed

38-1050 #71.02



- A: 136mm
- B: 16mm
- C: 20mm Head Wt. 300g

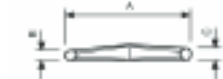


Chasing Hammer, 2 flat faces, fine polished

38-1051 #52.02



- A: 120mm
- B: 12mm
- C: 14mm Head Wt. 300g



Grooving Hammer, different faces, fine polished

38-1052 #53.02



- A: 115mm
- B: 20X4mm Head Wt. 200g

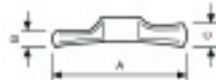


Bordering Hammer straight pattern, dull-polished

38-1053 #57.02



- A: 117mm
- B: 15mm
- C: 20mm Head Wt. 400g



Chasing Hammer, 2 differently bowed faces

38-1054 #403.02



- A: 118mm
- B: 32mm
- C: 32mm Head Wt. 400g



Double face polishing Hammer, differently bowed, fine polished

38-1055 #63.02



• Silversmithing and Art Metal

-by Murray Bovin; Revised by Peter M. Bovin

61-1072 Softcover-176 pages)



• Hammering Surface

Silversmiths use a hardened steel surface to shape metal. Swage blocks, anvils and stakes are needed for this operation.

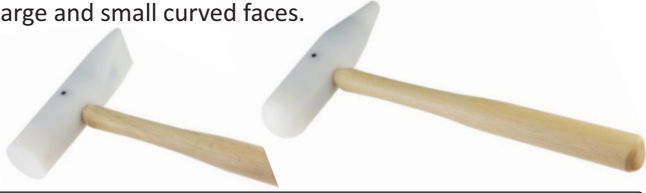
See Page# 110





3. Delrin Deadblow Mallets

- Delrin® mallets are the goldsmiths choice for anticlastic and synclastic sheet metal forming. Non-marring Delrin® heads are filled with steel shot to reduce recoil. Features two shapes, one a flat with cross peen and the other, a combination of large and small curved faces.



ITEM#	DESCRIPTION
38-1326	DELTRIN FLAT FACE MALLET -1 1/4" DIA (32 MM), 6 OZ (170g)
38-1327	DELTRIN ROUND FACE MALLET- 1 1/8" DIA, 6 OZ (170g)

4. Delrin Mallets

- Non-marring Delrin® mallets are used for forming and stretching sheet metal. Harder, heavier and long lasting than other plastics. Well balanced handle for increased power and strike control.



ITEM#	DESCRIPTION
38-1328	CROSS PEIN 38x7MM RECT / 38MM R, 150MM HL

5. Delrin Cross pein Tapered Cone Mallets

- These Delrin® hammers are for delicate goldsmithing tasks and sinusoidal stake work. Flat face chamfered edges on one side and cross pein on the other. Unlike traditional hammers, because they are made from delrin, they support more controlled forming.



ITEM#	DESCRIPTION
38-1329	CROSS PEIN 22x6MM RECT / 6.5MM R, 105MM HL

6. Soft Faced Hammers

- Impact resistant cellulose acetate heads. Sturdy curly hickory handle. Used by jewelers for delicate work.



ITEM#	DESCRIPTION
38-1151	SOFT FACED HAMMER 32MM x 350MM, 600g

7. Nylon Mallets - GERMANY

- These soft nylon faced mallets will not mar or dent work. Mallet is well balanced and comes with a hardwood handle.



ITEM#	DESCRIPTION
38-1306	NYLON MALLET- 22MM X 250MM, 140g
38-1307	NYLON MALLET- 27MM X 265MM, 215g
38-1308	CELL/NYLON MALLET- 22MM X 250MM, 140g
38-1309	CELL/NYLON MALLET- 27MM X 265MM, 215g

8. Cellulose / Nylon Replacement Heads

- Hammer heads can be replaced with these spares.



ITEM#	DESCRIPTION
38-1286	IMPACT-RESISTANCE CELL SPARE HEAD 22MM
38-1287	IMPACT-RESISTANCE CELL SPARE HEAD 27MM
38-1288	IMPACT-RESISTANCE NYLON SPARE HEAD 22MM
38-1289	IMPACT-RESISTANCE NYLON SPARE HEAD 27MM

9. Brass Head Mallets

- These soft nylon faced mallets will not mar or dent work. Mallet is well balanced and comes with a hardwood handle.



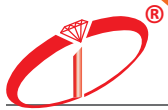
ITEM#	DESCRIPTION
38-1299	BRASS HEAD MALLET- 2 1/2" X 1 3/8", 1 LB
38-1300	BRASS HEAD MALLET- 2 1/2" X 1 3/4", 2 LB

10. Rubber Mallet

- Black rubber mallets with ash wood handle. Both faces flat. Rubber hardness 90 shore.



ITEM#	DESCRIPTION
38-1141	RUBBER MALLET 55MM x 320MM, 310g



HAMMERS

11. Goldsmith Hammers

- Especially designed for the jeweler, this hammer is made of gun metal with polished finished ends. One end is flat & the other is chisel shaped. Ideal for rivetting, forming & shaping.
- Weight - 177 gm. • Head Size - 3 1/2" x 3/4"



ITEM#	DESCRIPTION
38-1061	GOLDSMITH HAMMER

13. Ball Pein Hammers

- Made of drop forged polished hardened steel with a hardwood handle for solid striking force.
- One end flat and the other round.



ITEM#	DESCRIPTION	TOTAL WEIGHT
38-1066	1 OZ. (30g)	44gms
38-1067	2 OZ. (60g)	84gms
38-1068	4 OZ. (110g)	171gms
38-1069	8 OZ. (200g)	230gms

15. Chasing Hammers

- Made of forged steel with a hardwood handle. One large face to flatten and the other round to form shapes.



ITEM#	DESCRIPTION	DIA.
38-1121	4 OZ. -GERMAN	1"
38-1122	5 OZ. -GERMAN	1 1/8"
38-1126	6 OZ. -VALUE	1 1/4"
38-1127	4 OZ. -VALUE	1 1/8"
38-1128	3 OZ. -VALUE	1"

17. Texturing Hammers

- Texturing Hammers to make attractive patterns for jewelry and metalsmith. Multi face texturing hammers, two different patterns with each hammer to provide for a simple and easy method for patterning. Dimension - 1 1/8" round, 10" long.

ITEM#	DESCRIPTION
38-1170	RAISED PIN/BULLS EYE
38-1171	POINTED CROSS HATCH/BULLS EYE
38-1172	STARS/STRIPS



12. Brass Head Mallets

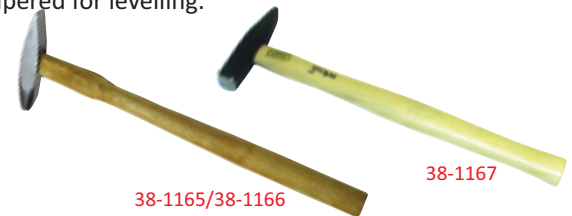
- Solid brass head will not mar thin or soft metals.
- Fitted with a hardwood handle, overall length 9".



ITEM#	DESCRIPTION
38-1301	BRASS & NYLON HEAD 2 OZ.
38-1302	BRASS HEAD 2 OZ. HEAD (Ø 5/8" X 2" L)
38-1304	NYLON HEAD HAMMER - VALUE (Ø 1" X 2" L)
38-1305	REPLACEMENT NYLON HEAD FOR 38-1304

14. Riveting Hammers

- Made of drop forged chrome plated steel with hardwood handles. Head has one flat side for spreading and the other tapered for levelling.



ITEM#	DIA.	HEAD
38-1165	3/8" X 3"	ROUND-FRANCE
38-1166	1/2" X 3 5/8"	ROUND-FRANCE
38-1167	1/2" X 4"	SQUARE-GERMANY
38-1064	1/2" X 3 5/8"	SQUARE-VALUE

16. Texturing Hammer with Multiple Head

- Developed for jewellers and metalsmiths. These hammers have patterned faces for exquisite design work. create different textures to enhance your sheet metal work.



ITEM#	DESCRIPTION
38-1362	TEXTURING HAMMER WITH MULTIPLE HEAD - 9 1/2" L



18. Rawhide Mallets - USA

- Made of tough, long wearing, cured rawhide.
- Ideal for use on broad faced striking surfaces.
- All fitted with durable hardwood handles.



ITEM#	HEAD (Ø X L)	WT.
38-1311	1" X 2"	2.0 OZ.
38-1312	1 1/4" X 2 1/2"	4.0 OZ.
38-1313	2 1/2" X 3"	6.0 OZ.
38-1314	3 1/4" X 3 1/2"	9.5 OZ.
38-1315	4 2" X 3 1/2"	11 OZ.

19. Plastic Mallets - USA

- Abrasion resistant plastic mallet fitted with a hardwood handle that has a bounce similar to rawhide.
- Will not mar or spark, also easy to clean.



ITEM#	HEAD (Ø X L)	WT.
38-1331	1 1/4" X 3"	4 OZ.
38-1332	1 1/2" X 3 1/2"	6 OZ.
38-1333	1 3/4" X 3 7/8"	9 OZ.
BALLPEIN PLASTIC MALLET		
38-1339	3" X 1 3/4"	9 OZ.

20. Mallets-Changeable Faces

- The ends of this mallet face may be changed to any combination.
- Different ends of fiber, nylon or brass are available.



ITEM#	DESCRIPTION
38-1322	BRASS & NYLON - 9/16" DIA, 2 5/8" L, 5 OZ.
38-1323	REPLACEMENT-BRASS HEAD
38-1325	REPLACEMENT-NYLON HEAD

21. Watchmaker Hammers

- Swiss style hammers, with finely polished forged steel heads fitted on hardwood handles.
- Use for miniature work.



ITEM#	HEAD LENGTH	WT.
38-1341	50MM	30 gm
38-1342	60MM-	43 gm
38-1343	70MM	47 gm
38-1344	80MM	78 gm
38-1345	90MM	106 gm

22. Oval Head Hammer

- The best tool for jewelers. This hammer has interchangeable heads of brass, nylon and steel.
- Ergonomic handle for a comfortable grip.
- Hammer Length - 10 1/2" lg. • Head Size - 2 1/4" x 1"



ITEM#	DESCRIPTION
38-1351	HAMMER WITH 3 HEADS
38-1352	REPLACEMENT - BRASS HEAD
38-1353	REPLACEMENT - NYLON HEAD
38-1354	REPLACEMENT - STEEL HEAD

23. Triad Hammer

- A versatile well finished hammer that combines three 18 mm different hammer heads in one tool.
- The head is a single unit with brass, nylon and steel faces.
- To change faces, pull and turn.



ITEM#	DESCRIPTION
38-1357	TRIAD HAMMER - 65 MM HL
38-1358	REPLACEMENT - BRASS HEAD
38-1359	REPLACEMENT - NYLON HEAD
38-1360	REPLACEMENT - STEEL HEAD